

Income Requirements for Agricultural Land Classification

Per Acre Income Requirement

Estimated Gross Income = Productivity X Commodity Price

Commodities:

Animal Unit Months – grazing land

Alfalfa Hay – irrigated and wild hay land

Spring Wheat – summer fallow, continuously cropped, and specialty crop land

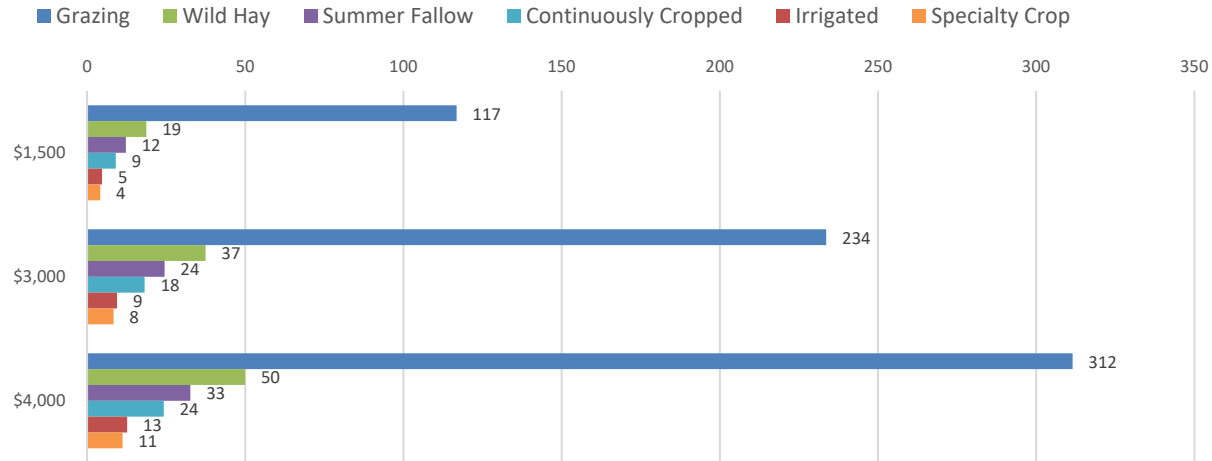
Income Requirement	Required Productivity by Land Use					
	Grazing	Irrigated	Wild Hay	Summer Fallow	Continuously Cropped	Specialty Crop
\$5 /acre	0.08 AUM/acre	0.04 tons/acre	0.04 tons/acre	0.84 bushels/acre	0.84 bushels/acre	0.84 bushels/acre
\$10 /acre	0.17 AUM/acre	0.09 tons/acre	0.09 tons/acre	1.68 bushels/acre	1.68 bushels/acre	1.68 bushels/acre
\$50 /acre	0.83 AUM/acre	0.45 tons/acre	0.45 tons/acre	8.39 bushels/acre	8.39 bushels/acre	8.39 bushels/acre
\$100 /acre	1.67 AUM/acre	0.90 tons/acre	0.90 tons/acre	16.78 bushels/acre	16.78 bushels/acre	16.78 bushels/acre
\$200 /acre	3.33 AUM/acre	1.80 tons/acre	1.80 tons/acre	33.56 bushels/acre	33.56 bushels/acre	33.56 bushels/acre
\$500 /acre	8.33 AUM/acre	4.49 tons/acre	4.49 tons/acre	83.89 bushels/acre	83.89 bushels/acre	83.89 bushels/acre
\$1,000 /acre	16.67 AUM/acre	8.98 tons/acre	8.98 tons/acre	167.79 bushels/acre	167.79 bushels/acre	167.79 bushels/acre
Statewide Average Productivity	0.21 AUM/acre	2.84 tons/acre	0.72 tons/acre	20.56 bushels/acre	27.67 bushels/acre	60 bushels/acre
Commodity Price	\$60 /AUM	\$111.30 /acre	\$111.30 /acre	\$5.96 /bushel	\$5.96 /bushel	\$5.96 /bushel
Average Estimated Income	\$13 /acre	\$316 /acre	\$80 /acre	\$123 /acre	\$165 /acre	\$358 /acre

Per Acre Income Requirement

Income Requirement	Percent of Parcels Qualifying					
	Grazing	Irrigated	Wild Hay	Summer Fallow	Continuously Cropped	Specialty Crop
\$5 /acre	95%	100%	100%	100%	100%	100%
\$8 /acre	79%	100%	100%	100%	100%	100%
\$10 /acre	64%	100%	100%	100%	100%	100%
\$12 /acre	46%	100%	99%	100%	99%	100%
\$15 /acre	25%	100%	99%	99%	99%	100%
\$20 /acre	9%	100%	98%	99%	99%	100%
\$30 /acre	2%	100%	97%	99%	99%	100%
\$40 /acre	1%	100%	94%	98%	98%	100%
\$50 /acre	0%	100%	90%	97%	98%	100%
\$60 /acre	0%	100%	77%	96%	96%	100%
\$80 /acre	0%	98%	45%	92%	95%	100%
\$100 /acre	0%	97%	20%	86%	90%	100%
\$200 /acre	0%	87%	2%	1%	59%	100%
\$300 /acre	0%	60%	0%	0%	12%	100%
\$400 /acre	0%	22%	0%	0%	1%	0%
\$500 /acre	0%	3%	0%	0%	1%	0%
Average Estimated Income	\$13 / acre	\$316 / acre	\$80 / acre	\$123 / acre	\$165 / acre	\$358 / acre

Flat Income Requirement

Average Acreage to Meet Income Requirement



	\$4,000	\$3,000	\$1,500
■ Grazing	312	234	117
■ Wild Hay	50	37	19
■ Summer Fallow	33	24	12
■ Continuously Cropped	24	18	9
■ Irrigated	13	9	5
■ Specialty Crop	11	8	4

Estimated Average Income by Parcel Size

Parcel Size	Estimated Income by Land Use					
	Grazing	Irrigated	Wild Hay	Summer Fallow	Continuously Cropped	Specialty Crop
1	\$13	\$316	\$80	\$123	\$165	\$358
2	\$26	\$632	\$160	\$245	\$330	\$715
5	\$64	\$1,580	\$401	\$613	\$825	\$1,788
10	\$128	\$3,161	\$801	\$1,225	\$1,649	\$3,576
20	\$257	\$6,322	\$1,603	\$2,451	\$3,298	\$7,152
30	\$385	\$9,483	\$2,404	\$3,676	\$4,947	\$10,728
40	\$514	\$12,644	\$3,205	\$4,902	\$6,597	\$14,304
50	\$642	\$15,805	\$4,007	\$6,127	\$8,246	\$17,880
75	\$963	\$23,707	\$6,010	\$9,190	\$12,368	\$26,820
100	\$1,284	\$31,609	\$8,014	\$12,254	\$16,491	\$35,760
150	\$1,926	\$47,414	\$12,020	\$18,381	\$24,737	\$53,640
200	\$2,568	\$63,218	\$16,027	\$24,508	\$32,983	\$71,520
250	\$3,210	\$79,023	\$20,034	\$30,634	\$41,228	\$89,400
500	\$6,420	\$158,046	\$40,068	\$61,269	\$82,457	\$178,800
1,000	\$12,840	\$316,092	\$80,136	\$122,538	\$164,913	\$357,600
2,000	\$25,680	\$632,184	\$160,272	\$245,075	\$329,826	\$715,200

Mixed Parcels

Income Requirement	Percent of Parcels Qualifying
\$5 /acre	97%
\$8 /acre	90%
\$10 /acre	81%
\$12 /acre	72%
\$15 /acre	62%
\$20 /acre	55%
\$30 /acre	52%
\$40 /acre	51%
\$50 /acre	51%
\$60 /acre	50%
\$80 /acre	48%
\$100 /acre	45%
\$200 /acre	14%
\$300 /acre	9%
\$400 /acre	4%
\$500 /acre	1%

Income Requirement	Percent of Parcels Qualifying
\$1,500	85%
\$3,000	77%
\$4,000	73%

Create a Parcel

Estimated Income of Agricultural Parcel			
Land Use	Acres	Income	Income/Acre
Grazing	100	\$1,284	\$13
Irrigated	20	\$6,322	\$316
Wild Hay	0	\$0	\$0
Continuously Cropped	0	\$0	\$0
Summer Fallow	20	\$2,451	\$123
Specialty Crop	0	\$0	\$0
Homesite	1	\$0	\$0
Total	141	\$10,057	\$71

Get social with us!



@MTRevenue



@MTRevenue



MontanaRevenue



Montana Department of Revenue



Montana Department of Revenue