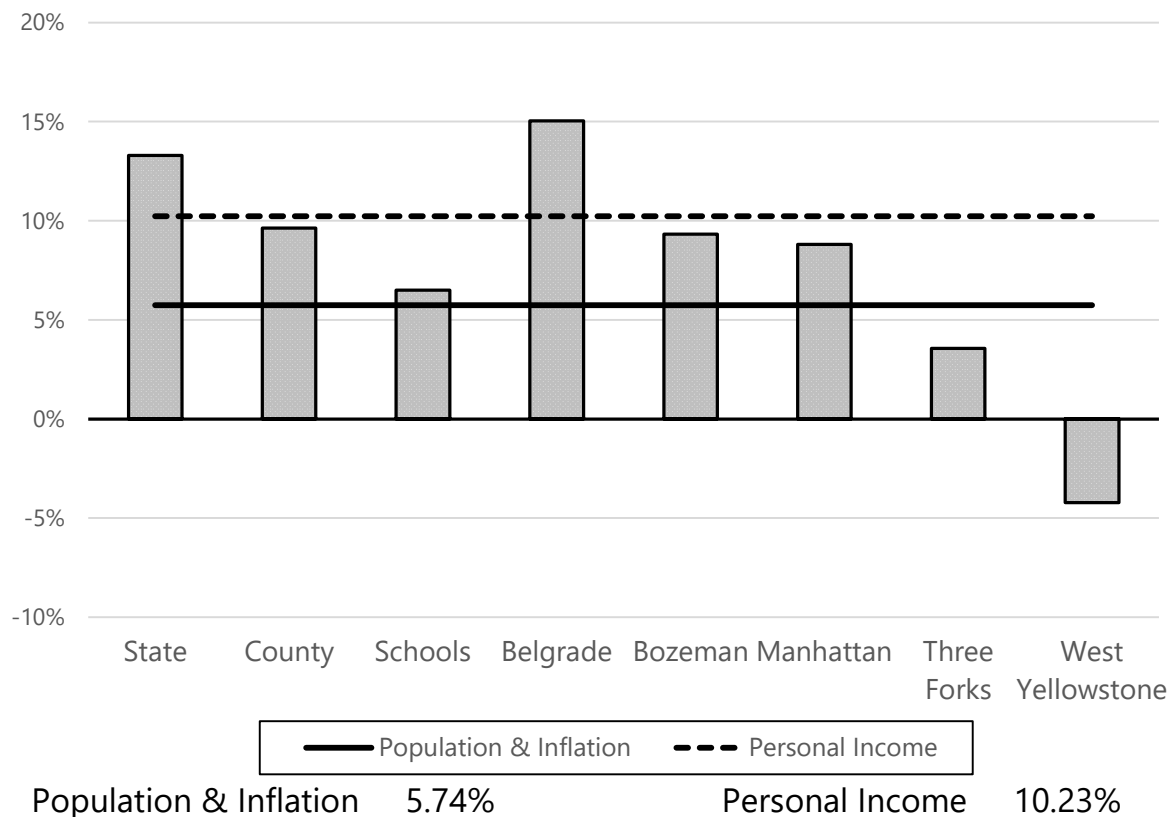


# Gallatin County

## 10-Year Annualized Property Tax Collection Change 2015 - 2024



Taxing Jurisdiction	Annual % Change in Taxes
State	13.30%
County	9.63%
Schools	6.50%
Belgrade	15.03%
Bozeman	9.32%
Manhattan	8.81%
Three Forks	3.56%
West Yellowstone	-4.22%

The bars on this chart show the level of average annual property tax collection growth by major taxing entity over the last ten years. The solid line represents countywide average annual growth in population and inflation as an approximation for growth in demand for government services. The dashed line represents countywide average annual growth in personal income as an approximation for ability to pay for property tax changes. This information is specific to the county, not any individual property. See more information and frequently asked questions at [MTRevenue.gov/PropertyTaxChanges](https://MTRevenue.gov/PropertyTaxChanges)